

MG POLYTEX[®] XTR

Polytex[®] XTR is an extremely strong, four-layer roof and facade membrane. The waterproof, vapor-open membrane consists of two layers of polypropylene with a functional breathable microporous film and woven reinforcement in between for extra tear and tensile resistance. Polytex[®] XTR protects the structure from wind and rain while allowing moisture vapor to escape through the membrane.

Application

Polytex[®] XTR is used as a waterproof, vapor-open layer on the cold side (typically the exterior) of roof and facade constructions in new builds and renovations. Polytex[®] XTR can be applied directly to both rigid and soft substrates in roofs and facades.

Benefits

- ✓ Extra strong
- ✓ Integrated tape
- ✓ Waterproof/rainproof
- ✓ Breathable
- ✓ Windproof
- ✓ High tensile strength and elongation at break
- ✓ Can be applied directly to board material and mineral wool
- ✓ 100% recyclable
- ✓ Roof and facade

Description	Width	Length	Article no.	EAN code	Quantity	Weight
Polytex [®] XTR	1,50 m	50 m	8220015000	8714672002409	20 roll / pallet	15 kg



Facade



Roof



On hard surfaces



On soft surfaces



Waterproof



Maximum 2 months UV-resistant



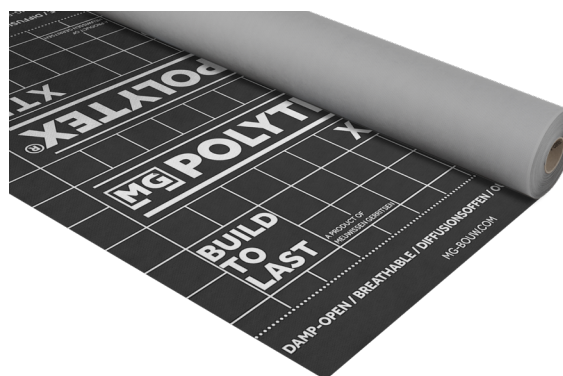
Breathable



Resistant up to 80°C

Specificaties

Open construction phase 2 maanden	Temperature resistance - 40°C / 80°C
Weight 200 gr / m²	Water vapour resistance Sd 0,025 m
Nail tear resistance initial (length) 500 N	Water tightness W1
Nail tear resistance initial (cross) 450 N	Fire class E
Tensile strength initially (length) 500 N / 50 mm	Elongation at break (length) >65 %
Tensile strength initially 470 N / 50 mm	Elongation at break (cross) 65 %



MG POLYTEX® XTR

Installation

The membrane is installed in a shingle-like pattern in the prevailing wind direction. The horizontal overlaps must be at least 100 mm for roof slopes greater than 25°, at least 150 mm for slopes between 15° and 25°, and at least 200 mm for slopes between 10° and 15°. For roof slopes below 25°, VASTR® Nail Sealing tape must be applied, and the overlap must be bonded using the integrated adhesive strip or VASTR® Non-woven tape. For vertical overlaps, a width of at least 150 mm and at most 200 mm applies, with the seam always positioned under a batten.

The membrane is fastened to the structure with stainless steel staples, after which counter battens are placed over the staples. When used with façade cladding, a pressure strip is placed over the staples on the stud.

At a corner, the membrane is folded over to the next available stud and secured with staples and, if necessary, a pressure strip.



Related products

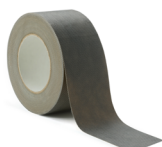
Tyvek®

FlexWrap tape



MG VASTR®

Non-woven tape



MG VASTR®

Butyl tape



MG VASTR®

Nail Sealing tape



Description

Tyvek® FlexWrap tape
 VASTR® Non-woven tape
 VASTR® Butyl tape
 Tyvek® Nail Sealing tape

Width

60 mm
 75 mm
 30 mm
 60 mm

Length

10 m
 25 m
 20 m
 20 m

Article no.

8106001000
 8107502504
 8103002000
 8106002010

EAN code

5450208029771
 8714672005202
 8714672005233
 8714672005332

Quantity

3 roll / box
 8 roll / box
 8 roll / box
 5 roll / box



INSTALLATION VIDEO

Not quite sure yet how best to apply Polytex® XTR?
 Scan the QR code and watch our installation videos.



All our products are intended exclusively as building or construction materials. Therefore, the user of our products is expected to be familiar with the basic principles of building physics, the regionally applicable building standards and the official national building regulations. Meuwissen Gerritsen B.V. and/or our employees are not liable for any damage resulting from (careless or incorrect) use of our products.



MEUWISSEN GERRITSEN

INFO@MG-BOUW.COM +31 (0)23 303 28 08 MG-BOUW.COM